

RESILIENCE IN ACTION: TRANSFORMING DISASTER PREPAREDNESS IN THE DOMINICAN REPUBLIC



Strategic success of the National Multi-Threat Early Warning System (MT-EWS), highlighting institutional best practices and Caribbean-wide replicability.

IMPACT AT SCALE



**5.83 Million
People
Protected**

MT-EWS reduces vulnerability for over half the Dominican Republic population, targeting high-density urban centers.



**Trilateral
Governance
Alliance**

Landmark MoU formalizes partnership between COE (Emergency Operations Center), Ministry of the Presidency (MINPRE), and National Council on Climate Change, breaking down institutional silos and multiplying the benefits of data sharing.



**Safeguarding
Critical
Infrastructure**

Over 43 institutions (water, energy, telecom) integrated into a unified alert directory for service continuity.

THE DIGITAL BACKBONE: RVEA & ALERTA-COE



**1,330+
Historical
Events
Standardized**

Centralized registry of impacts aligned with Sendai Framework standards informs future resilience planning.



**Risk and
Vulnerability
Atlas (RVEA)**

State-of-the-art Geographic Information Systems (GIS) platform provides neighborhood-level risk visualization for major cities like Santo Domingo and Santiago.



**Modernized
"Alerta-COE"
Communication**

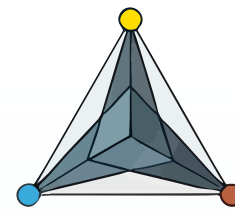
Public alert app professionalized with Common Alerting Protocol (CAP) standards, enabling geolocated warnings and inter-agency interoperability.

BEST PRACTICES FOR INSTITUTIONALIZATION



**THE
"EMBEDDED
TEAM"
MODEL**

Technical staff seconded to government offices, ensuring daily knowledge transfer and overcoming bureaucratic inertia.



**THE "DATA
TRIANGLE"
PARTNERSHIP**

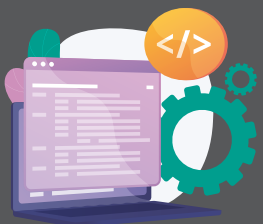
Sustainable technical alliance among COE (operations), ONE (statistics), and IGN (geography) ensures national data sovereignty.



**EXCEEDING
CAPACITY
BUILDING
GOALS BY 66%**

Over 300 stakeholders trained across 12 intensive sessions, building "human infrastructure" to maintain tools.

LESSONS LEARNED & STRATEGIC PIVOTS



PRIORITIZING TECHNOLOGY SOVEREIGNTY

Focus on sovereign code and open-source architecture for government ownership, moving away from "vendor lock-in."



MANAGING PARALLEL TRACKS

Technical implementation proceeds in parallel with governance restructuring.



DEMONSTRATING VALUE UNLOCKS DATA

Reluctant agencies shared proprietary datasets after seeing initial prototype, proving reciprocity is key.

THE CARIBBEAN HORIZON: FUTURE & REPLICABILITY



SOUTH-SOUTH KNOWLEDGE EXCHANGE

Successful peer-learning with Mexico's CENAPRED acts as blueprint for similar regional exchanges.



BLUEPRINT FOR REGIONAL RESILIENCE

MT-EWS methodology, including (Geographic Information System) structure and financial roadmap, is a replicable model for other Small Island Developing States (SIDS).



SCALABLE PILOT REGIONS

Successful pilots in Gran Santo Domingo and Santiago provide a validated framework for expansion into wider national and regional territories.

